

SOCIAL STUDIES

(English Medium)

PART – A & B

Time: 3 Hours 15 Min Class: 10th Maximum Marks:80

Instructions:-

- 1) Read and understand the question paper.
- 2) Answer the questions under PART-A on separate answer booklet.
- 3) Attach the given outline maps of India, World with the answer booklet of Part-A.
- 4) Write the answer to the questions under Part-B on the question paper it self and attach it to the answer booklet of Part-A.
- 5) Answer the questions from the given Three sections I, II, III of Part-A.
- 6) Follow the instructions of every section.

PART-A

Time: 2 hours

45 Minutes

Marks:60

Section-I

6X2=12 Marks

Instructions:

- i) This section contains Group-A and Group-B.
- ii) From each group choose any three answers from 6 questions.
- iii) Write the answers in one or two sentences.
- iv) Each question carries 2 Marks.

GROUP-A

- 1) What is sustainable development?
- 2) Maintain the major relief (features)division of India land mass.
- 3) Define trade winds.
- 4) Why the people of kudankulam have protested against the nuclear power plant project.
- 5) Name any two rivers that flow into Arabian sea.

6) Differentiate between final goods and intermediate goods.

Group-B

7) What Was called privy purse.

8) What is foreign policy?

9) Describe Mulki rules.

10) How could you appreciate the role of Dr Martin Luther king in awaring the people of USA

11) What do you know about 73rd and 74th constitutional amendments.

12) Differentiate national party with state party.

SECTION-II

4x4=16 (Marks)

Instructions:

- i) This section contains total 8 questions write any 4 questions.
- ii) Write the answers in 4-5 sentences.
- iii) Each question carries 4 Marks.

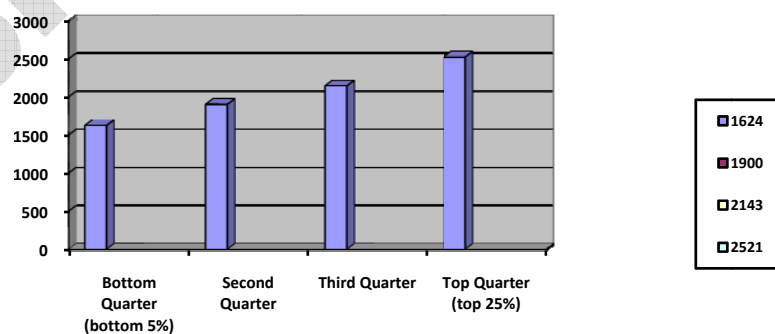
13) Name the important seasons in India.

14) Write a letter to concerned officer, highlighting the election malpractices in your constituency.

15) Draw the India map and locate any two perennial rivers.

16) Observed the bar diagram and answer the questions.

Calories intake per person in rural India



a)What percentage of people in rural India are consuming more calories than are required?

b) what is the reason for consuming less calories than are required in rural India?

17) how does the gender dias effect when the women work outside of the home.?

18) prepare a few slogans on the prevention of wars and promotion of peace.?

19) write any four qualities do you like in mahatma Gandhi.?

20) prepare a poster on the implementation of equality in your school.?

SECTION-III

4x8=32 (Marks)

Instructions:-

- i) This section contains Group-A and Group-B.
- ii) From each group choose any two answers from 4 questions.
- iii) Write the answers in 8-10 sentences.
- iv) Each question carries 8 marks.

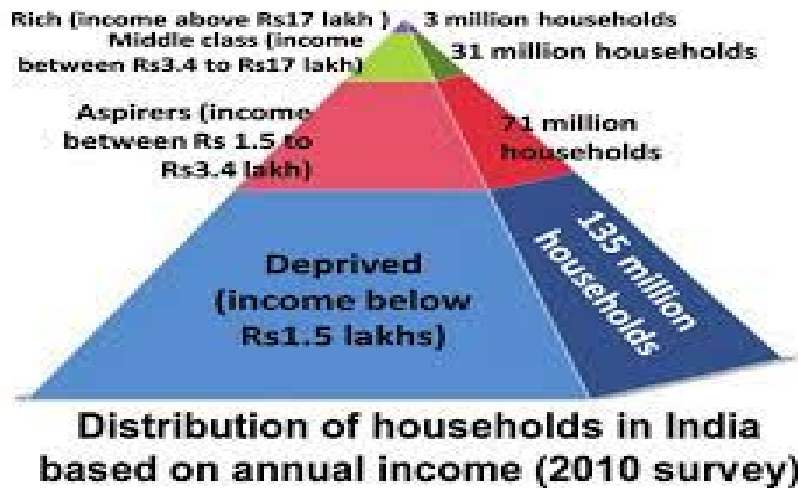
Group-A

21) Now a days in which economic sector the job opportunities are increasing? give reason.

22) read the following paragraph and interpret.

The socio economic aspects are very important work for water use management. conflicts with in communities in a reason and across sector such as used for agriculture, industry or drinking water are common.

23)Observe the following graph diagram and comment on it.



24) locate the following in the given outline map of India.

- A) New Delhi.
- B) capital city of Himachal Pradesh.
- C) River Krishna.
- D) Nilagiri Hills.

Group-B

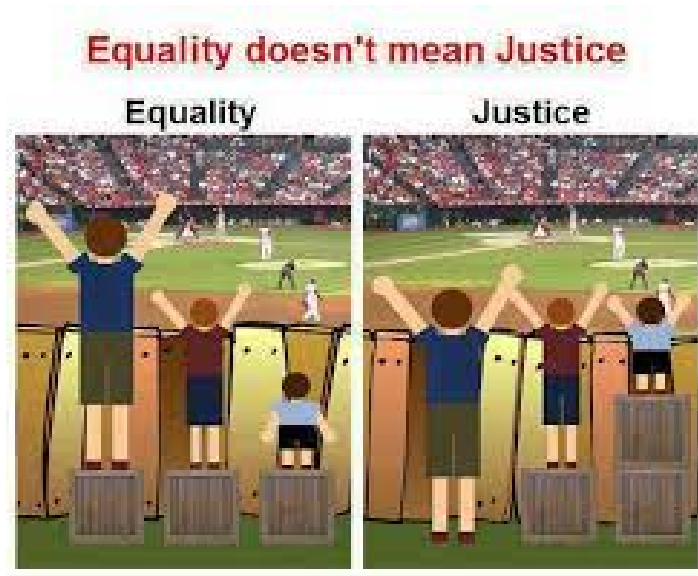
25) describe the main features of gentlemen's agreement how did this become a point of distrust between the region.?

26) read the following paragraph and write your opinion.

The twentieth century closed with India which was drawn into the world market, India which seemed to have a thriving democracy in which voices of different sections of the populations were marking themselves heard and in which division and communal political mobilisation were threatening to destroy social peace. It had stood the test of time of over 50 years and had built a relatively stable economy and deeply rooted

democratic . It still had not managed to solve the problem of acute poverty and gross inequality between castes, communities ,reasons and gender.

27) discuss the idea of equality and justice as shown in the picture



28) in the given outline map of world

- A) Egypt.
- B) Mexico
- C) Saudi Arabia.
- D) the country considered as promissory land by jews.

PART-B

Time: - 30 Minutes

Marks: 20

Note: -

1) Answer all the questions.

2) Each question carries 1 Mark

3) Answer are to be written in the question paper only.

4) Marks will not be awarded in case of over-written, rewritten or raised answers

5) Write the CAPITAL LETTERS (A, B, C, D) showing the correct answer for the following questions in the brackets provided against each question.

1) The area where gravel and pebble sediment deposited at foot hills of Himalayas is.

().

A) Bhabar. B) Terai. C) Black soil. D) Bhangar.

2) Use of fertilizers and pesticides are banned in this state. ()

A) Kerala. B) Karnataka. C) Maharashtra. D) Sikkim

3) The value of all final goods and services produced within a country during a particular year is called. ()

A) Gross national product. B) Net national product

C) Per capita income. D) Gross domestic product.

4) National food security act 2013 legalizes the people's right. ()

A) vote. B) work. C) Security. D) Food

5) The state which is spending more from the state

budget on education ()

- A) Himachal Pradesh. B) Bihar
C) Gujarat. D) Karnataka.

6) The chipko movement focuses on. ()

- A) Stop felling of trees.
B) Increase animal rearing.
C) To encourage organic farming.
D) Encouraging industries.

7) India has a total land frontier of ()

- A) 14,000km. B) 15,200km C) 16,200km. D) 77,200km

8) Temperatures moving from polar region to equator. ()

- A) Increases B) Decreases. C) No change. D) None of these

9) Nasbandi means. ()

- A) Family planning. B) Banner free grazing
C) Ban of liquor. D) Ban of felling trees.

10) the percentage of people working in unorganised sector
in India is. ()

- A) 65. B) 75. C) 83 D) 92

11) Telegram revolution was initiated by_____. ()

- A) Indira Gandhi. B) PV narasimha Rao
C) a b vajpayee. D) Rajiv Gandhi.

12) Hyderabad state become a democratic state in_____. ()

- A) 1952. B) 1953. C) 1954. D) 1947.

- 13) The state reorganisation act was passed in parliament in this year. ()
A) 1954. B) 1955. C) 1956. D) 1957.
- 14) Mera fibre means_____. ()
A) Factory workers. B) Torch bearers
C) Reformers. D) Farmers.
- 15) Eric hobsbawm says 23rd century was. ()
A) Age of extremes. B) Age of democracy.
C) Age of ideology. D) Age of intellectuals.
- 16)' Do or Die' slogan related to_____. ()
A) Non cooperation movement.
B) Quit India movement.
C) Khilafat movement.
D) Civil disobedience movement.
- 17) The words secular and socialist are included in_ ()
A) Schedules. B) Parts. C) Preamble. D) Fundamental right
- 18) Electorate means_____. ()
A) People. B) Children. C) Body of voters D) Govt officials
- 19) The USA camp up with Marshall plan. ()
A) Italy and France. B) Austria and England
C) Germany and Japan. D) Norway and Sweden.

20) Drafting committee was set up under the chairmanship of. (.)

A) Dr. B.R.Ambedkar.

B) Radhakrishnan

C) Sardar vallabhbhai Patel.

D) Subhash Chandra Bose

www.sakshieducation.com